



2006

ANNUAL

REPORT

36 YEARS OF SERVICE TO OUR YOUTH,
OUR FAMILIES AND OUR COMMUNITY

LETTER FROM THE DIRECTOR

When the history of The Bridge is written, three years will stand out. The first, of course, is 1970, when a great visionary with a remarkable history of her own, Sister Rita Steinhagen, welcomed the first young person, a 14-year-old girl on the run, into a renovated two-story house in Minneapolis' West Bank neighborhood. Since then, at all hours of the day and night, every day of every year, thousands of our community's children have followed through the welcoming doorway of The Bridge for Runaway Youth. They have been a true mosaic of cultures, colors, and classes, common in their need for a safe and comforting place amidst the crisis in their young lives. We lost our Rita in 2006, but the number of lives that have been changed, indeed saved, because of that dear woman is impossible to count -- perhaps known only to her God.



Executive Director Ed Murphy announces The Bridge Center for Youth to be completed in late 2007.

The second year was 1998, when another visionary, Thomas Sawyer, The Bridge's Executive Director for nearly 20 years, decided it was time that we begin to expand our services to include the growing numbers of young people who were homeless. With even fewer positive options than the runaway youth we typically served, those homeless youth were especially vulnerable to the ever-present danger of street life. So began our Homeless Youth Program, a rather utilitarian name for what has become a model for effective work with youth on the street.

And now, as I present this Annual Report to a public whose support makes this work possible year after year, I believe we are at another defining moment in our history. In 2006, we finalized and implemented the plans for our new Bridge Center for Youth. As of this writing I can hear the steady rumble of construction equipment and the sweet sound of the carpenters hammering as the Center rises across the street from where we have served so many for so long. At last, after years of shoe-horning staff and youth into four adjacent 100-year-old houses, we will move into the 27,500-square-foot Center, complete with on-site medical, educational, counseling, group, and residential services. Just as important, after years as a renter and the inherent vulnerability of annual leases, The Bridge will own our own space and control

our own destiny. The Bridge Center for Youth is a culmination of countless hours of hard work and dedication by far too many to name here. By more than doubling our capacity, we are ensuring that The Bridge will continue to be a source of growth and hope for generations to come.

I doubt that on that fateful day so many years ago Sister Rita thought about what The Bridge would look like in 37 years. Like most of us who have been in this work a long time, we like to think that eventually there will be no need for crisis centers for runaway youth, or that no teenager will be bound to live a homeless life. But there are no guarantees in this life, so we are obliged to plan for the future. In 2006, because of the investment of so many, the future will certainly be more promising for those who, for one reason or another, will continue to find their way to our door.

Thank you for your support in 2006.

Ed Murphy, Executive Director

OUR PROGRAMS



Thirty five years ago a remarkable woman saw the need for a safe and caring place for teenagers who had run away from home. She founded The Bridge for Runaway Youth as one of the first places in the nation for youth in crisis to find shelter and support.

Since 1970 we have offered an ever-evolving array of services designed to help youth grow into healthy, positive adults. Our programs have been recognized as “best-practices” for their effectiveness and financial efficiency in preventing and ending family crises and youth homelessness.

Shelter & Emergency Services

Typically the entry point for youth or parents looking for help, our Emergency Services Program offers a range of services from one-time phone counseling to ongoing counseling to shelter for youth ages 10-21 who have nowhere else to go. When youth come to our shelter, our priority is to see that the youth’s immediate needs are met and, whenever possible, to work with youth toward a healthy reunification with his or her family. Sometimes reunification isn’t possible, so we work with appropriate agencies to assist the youth in securing safe housing and care.

Homeless Youth Program

Homelessness among youth ages 16–21 continues to be a growing concern for our community. These are youth who have often run away from home because of serious conflict, been kicked out, or have aged out of foster care. With no place to call home, they rely on The Bridge to assist them in securing safe shelter and increasing self-sufficiency skills.

Street Outreach

The Bridge’s trained advocates seek out and provide support to youth on the street who are homeless or precariously housed. Some of these youth believe that the streets are safer than any relationship with the adults in their lives has been. Advocates provide basic necessities and healthcare assessments and information, as well as opportunities for shelter and housing to encourage youth to leave the streets.

Transitional Living Program

Homeless youth ages 16-21 who are ready to work toward stability may enter our Transitional Living Program. Youth may stay for up to a year as they develop the array of skills necessary to living independently, including budgeting, cooking nutritiously, cleaning, and maintaining relationships with landlords and fellow tenants.

Supportive Housing Program / Independent 365

Youth ages 17-21 who have developed the skills to live independently may enter our Independent 365 Program, which provides permanent supportive housing. The Bridge partners with private landlords, assists youth in paying rent, and provides ongoing supportive services for up to a year until the youth has successfully achieved housing stability.

Youth Empowerment in Action

Youth Empowerment in Action provides group counseling and activity opportunities for former Bridge clients or other youth who are similarly working on maintaining positive health and stability in their lives. Counseling and groups are offered at The Bridge as well as in area schools and include specific groups for young men, young women, GLBT youth, youth dealing with chemical dependency and other specific interest groups. Annual retreats and opportunities for peer counseling are also offered.

Health Education

Our Health Education Program provides healthcare and health education for youth on the street as well as all youth in Bridge programs. Youth entering Bridge programs receive a healthcare assessment within 24 hours of arrival. Our partnerships with clinics and medical professionals ensures that youth with serious issues can receive the help they need. Classes on chemical dependency, sexual health, nutrition and fitness, are offered regularly to youth in our programs.

Professional and Career Education

The Bridge’s Professional and Career Education program offers the youth in our housing programs the opportunity to explore educational and employment options. Since economic stability is key to long-term self-sufficiency, youth are introduced to opportunities for higher education as well as to careers with the potential for growth and advancement.

Teens Alone

We partner with Teens Alone, Inc. to staff an outreach program to suburban youth at risk of running away or being kicked out of their family homes.

Internship Program

The Bridge operates an extensive internship program for youth counselors, family therapists, and medical students specializing in pediatric care.

Volunteer Program

Members of the community can work in our shelter or do group projects like painting, raking, or collection drives.

Community Education

Staff, and sometimes youth from Bridge programs, speak to community groups about issues affecting runaway and homeless youth today.

2006 SERVICE REPORT

During 2006 The Bridge served a critical role as our community's 24-hour access point for services for youth and families in need, directly accessible without waiting lists, fees, or red tape. It was a busy year, with increasingly complex cases in our emergency shelter, unrelenting demand for transitional and permanent housing for homeless youth, and reduced services available in the community. With a dedicated staff and strong support from the community, we helped hundreds of youth get off the street, into safe shelter, and on to a better life.

The following service statistics are one reflection of the year:

Counseling, Outreach, and Health Care Services

24-hour telephone crisis counseling 4,684 calls
 Walk-in counseling 578 sessions
 Family counseling, on-site or in-home 622 families
 Aftercare, youth development 168 youth and empowerment
 Direct street outreach to runaway 8,452 contacts and homeless youth
 Health assessment and follow up 837 youth for homeless and street youth

Shelter & Housing Services

Emergency shelter 769 youth
 Transitional living program for homeless youth . . . 35 youth
 Permanent housing with support services 33 youth for homeless youth

Community Education

Speaking engagements and tours 6,891 attendees regarding youth issues

Volunteer/Intern Program

Direct service volunteers and interns 86
 Hours of direct service contributed 14,765
 Other volunteers (board, group activities) 235
 Hours of other volunteer service 22,178 (board service, group activities)

Contracted Services: Teens Alone

Services to youth and parents 342 youth in the western suburbs 117 parents



PROGRAM OUTCOMES

Counseling Outcomes

78% of parents report progress on complaint that brought them to The Bridge.
 85% of youth report progress on complaint that brought them to The Bridge.
 64% of parents report their overall family situation is better than before.
 78% of youth report a better relationship with their parents.

Shelter & Housing Outcomes

69% of youth served in therapeutic shelter program reunited with parents or extended family.
 89% of youth who returned home remained at home at follow up.
 98% of youth who returned home attending school at follow-up.
 100% of youth in transitional living program were working and/or going to school
 100% improved their skills to live independently.
 49% moved on to a stable living situation.
 97% of youth in permanent housing program maintained residence for at least six months.
 100% improved their skills to live independently.
 88% improved their job marketability.

PARTICIPANT DEMOGRAPHICS

	Emergency Services Program	Transitional Living Program	Youth Housing Program	Average of all programs
Gender				
Male	46%	54%	33%	45%
Female	53%	40%	67%	53%
Transgender	<1%	6%	0%	<1%
Not Reported	1%	<1%	0%	1.5%
Ethnicity				
Asian/Pacific Islander	2%	0%	0%	2%
African American	52%	63%	67%	54%
Caucasian	21%	20%	9%	21%
Hispanic	4%	3%	3%	4%
Multi-racial	11%	14%	3%	10%
Native American	5%	0%	12%	4.5%
Other	3%	0%	3%	2.5%
Not Reported	2%	0%	3%	2%
Age				
10–11 years	1.5%	n/a	n/a	1.5%
12–14 years	20%	n/a	n/a	18%
15–17 years	63%	11%	3%	58%
18–21 years	14%	86%	97%	21.5%
Not Reported	1.5%	3%	0%	1%

Service Area

The Bridge is located in Minneapolis. The majority of our clients are from Hennepin County with about half from the city of Minneapolis and half from surrounding Hennepin County suburbs. Services are available to youth regardless of their county or state of origin.

County of Origin

Hennepin	82%
Anoka	4%
Dakota	3%
Ramsey	6%
Other Minnesota counties	2%
Out of state	<1%
Other	3%
Not Reported	<1%

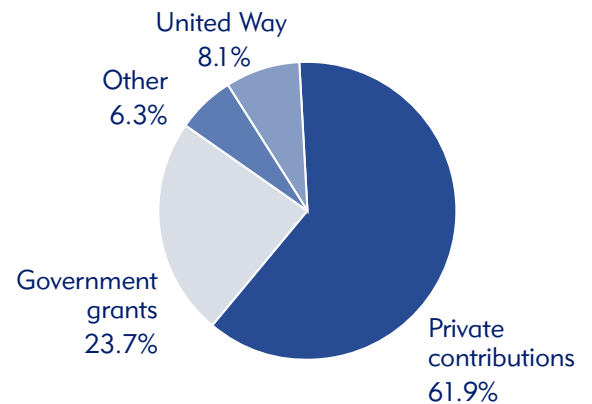
FINANCIAL REPORT

Based on audited financial statements.

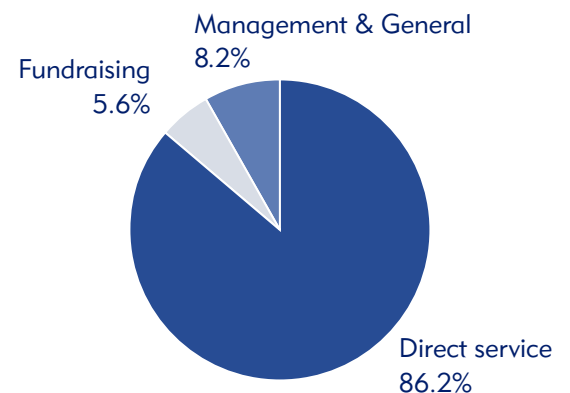
Support and Revenue

	2005	2006
SUPPORT:		
Contributions & grants	\$2,206,609	\$3,406,216
United Way	421,658	446,664
Government grants & contracts	1,176,455	1,304,011
Special Events Revenues		20,000
Special Events Expenses		(8,492)
Total public support	3,804,722	5,168,399
REVENUE:		
Service fees	233,395	224,147
Interest & realized gains on investments	9,656	53,890
Loss on Demolition of Asset		(1,035,813)
Gross rental income	124,811	57,968
Unrealized gain on investments	4,158	1,160
Miscellaneous	6,739	9,595
Total revenue	378,759	(689,053)
Total support & revenue	\$4,183,481	4,479,346
Expenses		
Program expenses	3,186,334	3,213,087
Management & general	294,009	305,509
Fundraising	215,149	207,418
Total expenses	\$3,695,492	\$3,726,014
(table continued next page)		
Assets		
Increase (decrease) in net assets	487,989	753,332
Net assets, beginning of year	2,254,952	2,742,941
Net assets, end of year	2,742,941	3,496,273

WHERE THE MONEY COMES FROM



WHERE THE MONEY GOES



THANK YOU, 2006 DONORS!

The Bridge's services are made possible by the generous support of private charitable contributions, Hennepin County, Greater Twin Cities United Way, U.S. Department of Health and Human Services, the State of Minnesota, and the City of Minneapolis. Listed here are private contributors to The Bridge in 2006.

(To report errors or omissions, please contact the development department at 612-377-8800.)

Foundations and Corporations

AHS Foundation, at the direction of Mr. Leland W. Schubert
Allianz Life Insurance Company
Allianz Life, designated by Annie Crawford
Ameriprise Financial Community Relations Program
Fred C. and Katherine B. Andersen Foundation
The Ankeny Foundation
Anonymous
Martha and Bruce Atwater Fund of the Minneapolis Foundation
Baker Foundation
BlueCross BlueShield of Minnesota, designated by Marcetta Searcy
Boston Scientific Foundation
Otto Bremer Foundation
Bromelkamp Foundation
Sheldon V. & Carroll C. Brooks Foundation at the direction of Mrs. Sheldon V. Brooks
Burdick-Craddick Charitable Foundation
Business Data Record Services
Patrick and Aimee Butler Family Foundation
Cargill Foundation
Curtis L. Carlson Family Foundation
Carolyn Foundation
Ceridian Corporation, in support of Project Cab
Ceridian Corporation, on behalf of Jonathan Kodet
Charity, Inc.
Charlson Foundation
Paul and Patricia Curran Foundation
Delta Dental of Minnesota
Deluxe Corporation Foundation
Lawrence H. and Elizabeth S. Dunlap Foundation
Jaye F. and Betty F. Dyer Foundation
Eaglemaster, Inc.
Jack and Bessie Fiterman Foundation
GMAC-RFC
Richard and Britt L. Gage Family Foundation
General Mills Foundation
Greystone Foundation
The Head Foundation
Hubbard Broadcasting Foundation
IWJ Charitable Foundation
Bob and Lucille Ingram Charitable Fund of the Fidelity Charitable Gift Fund
Itasca Consulting Group, Inc.
The Margaret H. and James E. Kelley Foundation, Inc.
Laird Norton Family Fund at the direction of Margaret L. Gunther
Lawson Software

LendSmart Mortgage, LLC
Lieberman-Okinow Foundation
Carl and Aune Lind Family Foundation
Love 4 One Another
Macy's Southdale Furniture Gallery
Malt-O-Meal Company
Ted and Robert Mann Foundation
Margaret Rivers Fund
May Department Stores Foundation
McKnight Foundation
Myers Thompson P.A.
NFC Foundation
Open Your Heart to the Hungry and Homeless
Paulson Family Foundation, at the direction of Tony and Janel Novachis
The Pentair Foundation
Perkins Foundation
Pohlad Family Foundation
Prudential Financial
Quadion Foundation
Elizabeth C. Quinlan Foundation
RBC Dain Rauscher Foundation
RSP Architects, Ltd. and Robert M. Lucius, AIA
Joseph H. and Florence A. Roblee Foundation
Samsara Foundation
Saunders Family Foundation
Sayer Charitable Foundation
Schwab Charitable Fund
Sexton Foundation
Shakopee Mdwakanton Sioux (Dakota) Community
Sieff Family Foundation
Social Venture Partners - Minnesota Fund of the Minneapolis Foundation, Social Venture Partner Teens
St. Louis Park Youth Development Fund of the Minnesota Community Foundation
Sundance Family Foundation
The TJX Companies, Inc. and The TJX Foundation, Inc.
Target
Teresa Charitable Fund
Thrivent Financial for Lutherans Foundation
Tom and Meredith Olson Family Fund of the Minneapolis Foundation
Vanguard Charitable Endowment Program
Viking Children's Fund
Visual Arts, Ltd.
WBA Market Research, on behalf of Kay Grady
WCA Foundation-Paige
Archie D. and Bertha H. Walker Foundation
H.E. and Helen R. Warren Foundation
Weekes Forest Products, Inc., North Star Division
Mark and Muriel Wexler Foundation



The Whitney Foundation
Wilmot Wheeler Foundation
World Childhood Foundation
Xcel Energy Foundation

Civic, Community, and Employee Groups

Aldersgate United Methodist Church
Augustana Lutheran Church of Minneapolis
CSC-UST School of Social Work Club
Employees of Cargill, Inc.
Central High School Students, Advisory Class of Marie Bourgoyne
Church of St. John Neumann
Citizens For Blatz Committee
Edina Human Relations Commission
Honeybelles, Inc.
Kowalski's Uptown Market, Groceries for Good Causes
Employees of Macy's Southdale Furniture Gallery
Orono High School National Honor Society
Employees of Park Nicollet Health Services
Students of Robbinsdale Area Schools Prudential Youth Leadership Program
Social Venture Partner Teens
Spirit Garage
St. Luke's Episcopal Church
St. Mary of the Lake Church, Neighbor to Neighbor
The Onion
The Spud Society and Finnegan's 3rd Annual Spudtoberfest
Triple Rock Social Club Benefit
Twin Cities Ripple Foundation
Employees of U.S. Fish & Wildlife Service
Union Presbyterian Church, Senior High Youth Group "Souper Bowl of Caring"
Unity Health Care, Inc.
University of Minnesota Physicians
Uptown Natural Care Center
Wayzata Community Church
William Mitchell College of Law, ABA Law Student Division
William Mitchell College of Law Fighting Eel Pout Hockey Team

Employees of UBS:
Joan Banashek
Nancy Barber
Reginald Boyle
Jessica Cripps
David and Ardis Ericson
Nancy and Michael Hopp
Kathryn Hoy
Peter and Elizabeth Jackson
Steven Kittay
Steven F. Kittay

Eric Perry
Gregory Stevens
Michelle and Mark Thorson

*Joel Peterson's Building Bridges Charity
Challenge:*

Sharon and Thomas Anderson
Steve Berger
David Bland
Nathan and Susan Christenson
Clay Borne Company
The Cultured Wall, LLC
Beverlee M. Damyanovich
Doug Dreiss
Sara Franck
Sue and Thom Franklin
Christine and Joshua Friberg
Diane Frick
Bryan and Sara Friendshuh
Lois and Roy Friendshuh
Frost Cabinets
Peter Haakenson and Haakenson
Hardwood Floors
Matthew Henry
Chong and Julie Hunter
J S Johnson & Associates
Jennifer Knapp
Paul and Nancy Koepcke
Jennifer Koomen
Joshua and Autumn Koomen
Michele and Johannes Koomen
Chuck Kowalski
Cooper and Cole Kowalski
Elizabeth Lindgren
Zack Madison
Kimberley McCarten
Leland and Marilyn Meyer
Eric Mixdorf
Mose Furniture & Cabinet
Lilian Msambichaka
Central Chapter of Thrivent
Financial for Lutherans
Cheryl A. Nelson
Northridge Plumbing Co.
Gretchen A. Pederson
Pegg-Whitney Woodworks
Penn Avenue Electric
Jill and John Peterson
Joel Peterson
Miriam and Jay Peterson
Jack Ramirez, Jr. and Jennifer
Schuler
Theodore and Janet Ranheim
Denis Rider and Mary Pat
Sigurdson
Kari and William Roberts
Robins Kaplan Miller & Ciresi
Hans Schumacher
Anthony Schuster
Timothy Schwob
Aaron Taylor
Brent and Shannon Vasseur
Don Forsman and Welch Forsman
Associates, Inc.
Cindy and Jeffrey Wilburn
Thomas and Pamela Wilmouth

*Holiday party hosted by Steven and
Julie Nilsson:*

Amy and David Anderson
Peter Bast
Mikkel and Lois Beckmen
Dorothee Beehstadt
Dan Bergeron
Leslie and Steven Bosrock
Christine Brandt
Shane Breault
Erik Brown
Elizabeth C. Budge

Daniel C. Callinan
Daniel and Kelly Callinan
Bruce Carland
David Carland
Adam and Lauren Crepeau
Kevin P. Curry
Kevin and Mary Curry
Robert Davis and JoEllen
Martinson
Martha Delaney
Joe and Bernice Dervie
Nicole and Darrin Dufresne
Chris and Kathi Eilers
Phil Engen
Gregory and Nicole Erickson
Kimberly Follett
Charles Gardner
Patrick Griffin
Jeff Hall, Real Estate Recycling,
LLC
Beth Holger and Subashini
Ambrose
Michael and Sara Honsa
Elizabeth Kane
Mary A. Kane
Matt and Jeanne Kenevan
Karen Kramber and Michael
Flanagan
John Kubes
Stephen Lysen
Brigid McCarthy
Patrick and Paula McCarthy
Kenny and Joelle McMahon
Laura Melnick and Mark Dahlager
Greg Moltumyr
Peter and Kathryn Mork
Eileen Muelken
Nan and Ed Murphy
Shea Murphy
Connie and Pat Nelson
Arthur and Mary Nilsson
Camille Nilsson
Monica Nilsson
Stacey and James Nilsson
Steven and Julie Nilsson
Jeffrey Nosbush
Mary Jo and David Nye
Daniel and Virginia O'Neill
Matthew and Regina Oelschlager
Corey R. Olsen
Rebecca Orttel and Steven Kluz
Leah and Marc Osborne
Brian and Heidi Pergament
Mark and Cheryl Peterson
John Petroskas
Barbara L. Pratt
Daniel and Katherine Queenan
Lori and Anthony Reinhardt
Jon and Jill Riley
Frank and Elizabeth Russomanno
John and Faye Ryden
P.J. Scherven
Daniel T. Schisel
Steven B. Schwanke
Jason Simek
Lisa and Jeffrey Simek
Christian and Jennifer Sirek
Nils and Alyssa Snyder
Robert J. Thomas
Joel Torborg
Deborah Waba and Timothy Fallon
Thomas Walsh
William and Debra Wardwell
Bruce and Sherry Weaver
Patricia and Barry Weber
Anthony Weinstine
Lloyd Zimmerman and Becky
Palmer

Individuals

Rosalie M. Alden
Donna Allison
Bernice Amacher
Robert Amis
Richard and Sarah Amos
Craig Amundsen
Ann Andersen
Carolyn and Ray Anderson
Scott and Sharon Anderson
Barb and Russ Andrews
Ruby Anik
Anonymous
Sally A. Anson
Douglas Armato
Tom Arneson
James and Mary Arnold
Howard Atkins, on behalf of Bob
Strickland
Lynelle and David Aukes
Jennifer Autry
Mark Badenhoff
Susan and Thomas Bailey
Sandy and Barry Baines
Jeffrey and Patricia Baker
Tom and Kathy Baldwin
Len and Joyce Banaszak
Robert Barghini
Nancy K. Bartsch
Jeff and Julie Basche
Thomas and Mary Baskerville
Paul Bauer and Patricia Cretilli
Gail Be and Joel Lebewitz
Lisa and Don Beaupre
Matthew R. Beck
Marian Behrend
Craig and Shelly Bell
Christine Bengston
Patrick and Joni Bennett
James and Karen Bergstrom
James Biederman
Amy and Paul Biewen
Edith S. Black
Thomas J. Blackmar
Allen Blaich
Bob and Suzy Blewett
Charles and Joyce Blomquist
Mary Bochnak
Michael Boo
Nan Booth and Gary Fischler
Janice and Robert Bowman
Cathy ten Broeke and Margaret
Miles
Allison Bross
Carl and Karen Brown
Jeannette C. Brown
Larry and Wendy Brown
Calvin and Bessie Bruer
Jeff Bugno
Barbara Bunch
Jane Burck
Jim Burns
John Burns
Michael G. Burton
Peter Butler
Nancy Byron
Mary Cady and Steve McCauley
Alex Calingaert and Suzanne
Candell
James and Karin Callanan
Susan Calmenson
Michael and Edith-Nicole Cameron
James Chalin
Stafford and Sharon Christenson
Regina Christopher
Daniel, Karl and Sam Clausen-
McKiver
Helen T. Cleveland
Jim and Elsie Clubb
Don and Marge Coffey
Donald and Loretta Combs
Roger and Wallys Conhaim
Nicholas Connel
Virginia R. Connors
Jeffrey D. Conrad
Mark and Karri Copman
Ron and Joan Cornwell
Jeanne Corwin
Sam and Mary Jo Cote
Susan Cotten and Harvey
Friedenson
John S. Crouch
John S. Curtin
Fran Cuthbert
Allen and Penny Dahl
Jim Darcy
Thomas K. Davis
Leontine M. Day
Ruth and Bruce Dayton
Paula W. DeCosse
Joyce and Carter DeLaittre
Dirk DeYoung and Sarah Parsons
Mary L. Delehanty
Adele Della Torre and Spencer
Kubo
Michael Dettvicher
Dan Diebold
Paul Dixon
Nicole Dobrauz
John and Susannah Dodson
Ryan and Stacy Dolan
Mary Donnelly
Donald and Constance Dosen
Paul and Jodelle Dougherty
Diane and John Dovolis
Molly K. Driscoll
Margaret W. Dunnigan
Dave Edmonds and Carol Veimke
Doran and Nancy Edwards
Daniel B. Eitingon, Ph.D.
William and Carmelita Ellis
Ann Emery
Colleen Engeldinger
Paul Engh
Joline Epple
Martha M. Erdman
Leroy and Kathryn Erger
Galene Erickson
Marilyn E. Erickson
Thomas D. Erickson and Katherine
Solomonson
Wayne Evans
Francis and Jessie Fallon
Janet Farrell
Suzanne Fattah
Gary C. Feldman
Betsy Fennelly
Nate Fischler
Patrick and Joanne Finnegan
Frederick and Lisa Fish
Don and Sandy Flamm
Sam and Harvey Fleitman
Tim and Ann Fleming
Randolph Fogerty and Constance
Walker
Mary and Gary Forbes
Michael and Maryfaith Fox
Peggy and Don Franson
Diane Frick
Robert Friedheim
Michael Friedman and Susan Hasti
Joanne Frissell
Newton and Phyllis Fuller
Britt and Rick Gage
Christine Gage
Heidi and Dan Galbraith
Jane B. Galbraith
Jeanne and Harry Gallaher
Susan and Gerald Ganann

Carolyn and Mike Garris
 Burle and Lou Gengenbach
 Timothy and Jill Geoffrion
 Tom and Susan Gerhard
 Gaylen and Penny Ghysin
 Kristine and David Gigerich
 Scotty and Peter Gillette
 Bernard Gingold
 Dave and Sunny Girk
 Sarah Goldstein
 Lawrence and Carol Goode
 Jay Gorseger
 Susan and Jack Graber
 Kay Grady
 James R. Gray
 Marion C. Greene
 Thomas and Barbara Greenspon
 Sharon Gregoire
 Maria Grifoni
 Jessica Grunklee
 Dorothy C. Guilford
 Kirsten M. Gullickson
 Margaret Gunther
 Patrick Hagan
 Lynn A. Hagedorn, M.D. and
 Charly Zajicek
 Kathleen Haines and Robert Swartz
 Donald and Mary Hall
 Melanie R. Hall
 Alison and Mark Halley
 Mike Hannon
 Melanie Hanson
 Paula Haraldson
 Maire Hark
 Harold C. Harris
 Lou Harris
 Pat and Laura Harris
 Jim and Tamara Harvanko
 Janice Hathaway-Ott
 Bradley and Sandra Haycraft
 Edward and Ellinor Hayward
 Carol and Paul Hedberg
 Peter and Anne Heegaard
 Jon Heidinger
 Geoffrey Hellman
 Lisa M. Hemmerling
 Karen Hemstad
 David and Kris Henderson
 Jed Hepworth and Lee Schubert
 Eileen and John Hesch
 Nicholas A. Hesse
 Connie Hesseveick
 Chris Hetland
 James and Barbara Hetland
 Frederick J. Hey, Jr.
 John and Shirley Hibbs
 Barbara Hickok
 Dylan Hicks and Nina Hale
 Nell R. Hillsley
 Charles and Shawn Hipp
 Fran and Steve Hirsch
 L.C. and Mary Lou Hoefl
 Charles and Sandra Hoglin
 Harold and Jeanette Hoglin
 Dale and Faith Hoiseth
 Richard Holcomb
 Ann and Jim Horn
 Kevin Horne
 Tom and Libby Horner
 Kara Huelsmann
 Kevin M. Hummel
 Patricia A. Hunter
 Sally Hwang
 Michael S. Israel and Laura Beth
 Landy
 Paul H. Jachman
 John Jaffray and Allyson Rudy
 Ann and Charles James
 Doug Jandre
 Arthur and Rosemary Janousek

Mary and Joseph Jester
 Tommy and Julie Johns
 David and Celeste Johnson
 Gary and Katherine Johnson
 Mike and Judy Jones
 Denise and Joseph Jubert
 John and Linda Kading
 Donald and Phyllis Kahn
 Jessica Keener
 Mary Keithan
 John F. Kelly
 Lois and Richard Kelly
 Thomas M. Kelly
 Lisa R. Kiesel
 Jerry Kinder
 Susan Kinder and David Vealitzek
 Michael J. Kivley
 James Kleinman
 Raymond and Carol Klempka
 Chuck Knight
 Judith Kogan and Hugh Wolff
 Brad Konik
 Lindsey R. Kopp
 Kathleen M. Koshiol
 Roger Kramer
 Brian J. Kremmin
 Dianne Krogan
 Mrs. Joann Kruckeberg
 Molly Krueger
 Andrea Kuenning and Daniel
 Leisen
 Bill Kulcsar
 John F. Kundtz and Thomas Amon
 Tineka S. Kurth
 Dr. Connye LaCombe
 Linda and Lance LaVine
 Frederick Langendorf and Marian
 Rubenfeld
 Rollie H. Langer
 Rosemary Lapensky
 Dave and Stephanie Larsen
 Lois C. Larson
 Marvin C. Larson
 Sarah A. Larson
 Lisa Lau
 Pamela Lehan
 Leslie and Chad Leigh
 Sheryl and Eric Leill
 Vivian Leith and Stewart Hudnut
 Adele L. Lennig
 Susan E. Lester
 Rand Levy
 Margaret J. Lewis
 Mary and John Lilly
 Nancy and Philip Lindau
 Ruthanne Lindback
 Georgia Littlefield
 The Lizama Family
 James Lockhart
 Leslie Loeding
 Marsha and Dan Loewenson on
 behalf of Ruth Loewenson
 Peter Loewenson
 David and Cindy Lubars
 John and Suzanne Lund
 Margaret Lund and Christopher
 Steller
 Robert A. Lundborg
 Stephanie and Bruce Lunning
 Anthony and Gail Lusvardi
 John A. MacDonald
 Brian MacDonell
 Matthew and Ruby Madsen
 Lorene and Tom Magne
 Rich Maier
 John and Nancy Malo
 Joanne Mambretti
 Carol Manning
 Laura Mapp
 John and Sallie March

Max Markusen
 Monica K. Marsh
 Bob and Diane Marshall
 Ron and Nancy Marshall
 Jerry Massmann and Irma Cameron
 Tom and Deann Mathern
 David W. Matthews
 Anne Mavity and Thomas Fulton
 Helen E. McClelland
 John W. McConnell, M.D.
 Wm. Peter McCulloch
 Jeffrey McCullough
 Edward McFalls and Marcia
 Haffmans
 Jeff McHugh
 Daniel J. McInerney, Jr.
 Leo McMahan
 Carol A. McNearney
 Donna C. McRoberts
 Patricia Meier
 John C. Merrill
 Martha Meyer-Von Blon
 Margaret A. Michaelson
 John Michel and Berit Midelfort
 Alison and Patrick Midden
 Carol Midtbo
 Jordan Milan
 Bill and Katie Miller
 Nancy Miller and Edward Levin
 Nicholas G. Miller
 Todd and Jennifer Miller
 Victor E. Miller
 Wendy A. Miller
 Stacey Mills Heins
 Mark Mishek
 Carol Moleski
 Carol Moller
 John M. Moore
 Thomas and Inger Moore
 Wendy Morina
 Leah and Doug Moses
 Grace Mueller
 Dave Murphy and Kelly Vossberg
 Kingsley H. Murphy, Jr.
 Nan and Ed Murphy
 Ted and Judy Myers
 Bernard Nelson
 Michael A. Nelson
 Vincent and Debra Nelson
 Win and Christie Neuger
 Joanne Newham
 Eric Newman and Janice Gepner
 James and Patricia O'Brien
 Isabell O'Connor
 Patti and Daniel O'Leary
 Scarlett O'Malley
 Bill and Mame O'Meara
 Louis Oberhauser
 Mark and Becky Odland
 Lisa and Steven Offerdahl
 Rick, Mary and Nick Olson
 Suzanne and Kirk Olson
 Tom and Meredith Olson
 Andrea N. Olufson
 Don and Bonnie Paczkowski
 Cindy and Greg Page
 Laura, Robert, and Elizabeth Page
 Thomas C. Pagel
 Joe and Mary Palen
 Valerie K. Palm
 Ralph S. Palmer
 John and Joan Parsons
 Andrew D. Paulson
 Christine and Greg Paulson
 Phillip and Marilyn Payne
 Ann and Thomas Pearson
 Mark and Kimberly Pearson
 Elaine and Anthony Peet
 Peter and Lora Pesheck
 Brent and Bonnie Peterson

Bruce and Debbie Peterson
 Carol Peterson and Darren Acheson
 Paul D. Peterson
 Sue Peterson
 Monica Petrie
 Jim Pinckaers and Nancy Ott-
 Pinckaers
 Robert and Roxanna Plouff
 Mike and Marti Porter
 David M. Pote
 Al and Ramona Potter
 David B. Powell and Barbara
 McLean
 Jerry and Jaqueline Powell
 Ravi and Fiona Pradhan
 Barbara Pratt
 Barbara G. Raddatz
 Jackie and Robert Radde
 Judie Randall
 Gary and Susan Rappaport
 Tony Rauch
 J.S. Raugust
 Adam W. Rautio
 John P. Reger
 Jim and Kate Reidy
 Susan and Charles Reinhart
 Deborah Renshaw
 Marilyn and Jeffrey Rivkin
 Kurt and Aida Roberts
 Tracey L. Robertson
 James R. Rognas



Sharon and Dale Ronning
 Michael Rooney
 Paula Rooney
 Andrew Root
 Michael Root
 Craig Roth and Carolyn Bowles
 Howie Rotvold
 Steven Rousey and Diane
 MacMillan
 Barbara Ruddick
 Steve and Patti Rude
 Janel Russell
 Kala and Warren Ryan
 Mary Dow Ryerse and Allen Gooch
 Heather and Robert Rykhus
 Kimberly and Thomas Sabow
 Paul and Pat Sackett
 Harold and Jacqueline Sadoff
 Rabbi Jared H. Saks
 Laura and Robert Salazar
 David Sandler
 Linda and John Satorius
 Eric and Jacquelyn Saunders
 Marcetta J. Scearcy
 M. Patricia Schaffer and David
 Weissbrodt
 Dennis Schapiro and Jeanne Andre
 Noel Schenker
 Peggy Schierl
 John and Mary Schmitz
 Carl and Doris Schneider
 Karen S. Schneider
 Larry G. Schoenecker
 Lola Schoenrich
 Robert D. Schrank
 Steven Schreiber
 Pat and Tom Scott



Buddy Scroggins and Kelly Schroeder
 Charles and Dolores Seashore
 William and Kerene Seratzki
 Joseph Sesil
 John and Cynthia Severson
 Patrick Shannon
 Wendy Sharpe
 T.J. Sheahan
 I-Ming Shih
 Prem Shunmugavelu and Jennifer Grudnowski
 Bill Sias
 Philip and Laurie Sieff
 Shirley Silberman
 Ellen Silva and Wilson Gibbins
 Cal and Sandy Simmons
 Bill and Carin Simpson
 Debbie and Mark Sims
 Kimberly and William Six
 Chelsey and Ryan Slack
 Farrah Slad
 Lana Slavitt
 Richard Sloss and Dana Barnes
 Annette Smith
 Kristine M. Smith
 Ronald J. Smith
 Mark Sorman
 David and Joan Southworth
 Thomas and Elaine Spaeth
 Ann Sparks
 Rev. Stanley J. Srnec
 Lynne E. Stanley and Christopher A. Elliott
 Lauren Star
 Steven and Lori Stein
 Barbara and Norman Steinberg
 Roz and Irv Steinfeldt
 Cindy Stephani
 Mr. & Mrs. Philip M. Stone, Jr.
 Janette and Gregg Strathy
 Robert A. Stryk
 Patricia and Donald Sullivan
 Margaret Summers
 Tom and Mary Supel
 Mary F. Sutherland
 Ken and Debbie Sutton
 Matthew and Jeanne Sutton
 Eileen E. Swanson

Wendy Swanson
 Terrence Sweeney
 David J. Swenson
 Stephen and Carolyn Tatum
 Dr. and Mrs. B. Ross Taylor
 R. Wayne and Leslie Teddy
 Gretchen and Daniel Tetzlaff
 Ahmed Tewfik and Heba Shoukry
 Jane A. Thames
 Bob and Nancy Theiler
 Joseph Thoemke
 Stephanie J. Thompsen
 Michael and Linda Thompson
 Stan Thompson
 Wendy Thompson
 Deborah Thorp
 Mike and LuAnn Tolliver
 James E. Toms
 Tim and Elisabeth Traff
 Barbara Trebisovsky
 Robert and Margaret Turner
 Bonnie Turrentine
 Jean and Dean Uglem
 David Upin
 Jane Upin
 Jeff and Jodi Upin
 Virginia Van Dusen
 David and Lynn Vander Haar
 Lee and Carolyn Vickers
 Paul and Betsy Von Kuster
 Mark Waldorf
 Fred and Alice Wall
 Francis Walther
 Dale and Jennifer Warner
 David and Nancy Warner
 Karen Weaver and John Davis
 William and Linda Weber
 Linda Webster
 Steven Weekes
 Kira and Matt Weier
 Fred and Elizabeth Weiner
 Monica Westerlund
 John and Kelly Wheaton
 Darlene and Tom White
 Cornelius and Elizabeth Wiens
 Steven and Priscilla Williams
 Jeremy Winter
 William and Ione Winter
 Dennis and Kathryn Wippering

Steven and Kathryn Wirth
 Elayne and Marvin Wolfenson
 Jim and Shelly Wollman
 David Woodard and Katherine Meerse
 Daniel Wozney
 William E. Wright
 Jack Yarbrough
 Joan Young
 Kathy and Howard Zack
 Carol Zarling
 Gene and Nancy Zemske
 John Ziegenhagen
 John R. Zimmerschied
 Olympia Zimms

Dedications

In honor of all the kids that need you and find you: Anonymous
 In memory of Mark Armus: Sharon Armus
 In memory of Edward Baker: Vivian Leith and Stewart Hudnut
 In memory of Warren "Bud" Delos Block, from the Pediatric Radiology Staff
 In honor of our children and their families for Christmas: Fred and Rosemary Booth
 In honor of Lenny Brandt: Anthony DeAngelis and Carol Liebeler
 In honor of The Bridge Staff: Craig Luedemann and Mary Robischon
 In memory of Karen Bruggemeyer: Joan Amundsen
 In memory of John Cathey: Rosalind Henney
 In memory of Walter and Alice Chapman: Lee and Sandy Chapman
 In honor of the Hematology/Oncology Staff at Children's Hospitals & Clinics: Stephen Nelson and Peter Vitale
 In honor of Kim Christensen: Derek Blechinger
 In memory of Irma Danielson: Ruthanne Lindback
 In honor of the Defenbau Family: Constance Pikala
 In memory of Jason Doblal: Jill Barger
 In honor of Laurel Edinburgh, for her work with Twin Cities youth: Nancy Miller and Edward Levin
 In memory of daughter Charna Efron: Jeanne and Stan Efron
 In honor of Dean Elias: Erik and Robin Elias
 In memory of David Flood: Vivian Leith and Stewart Hudnut
 In memory of Stella Forstrom: Susan J. Forstrom
 In memory of Carver Fouks: Barry J. Sitlow
 In honor of the wedding of Karen and James Fuchs: Richard and Donna Gladon
 In honor of Mark Fuch's 32nd birthday: Jan Fuchs
 In honor of Tara Glad: Tom and Stasia Steinhagen
 In memory of a loving pet, Grueber: Ruthanne Lindback
 In honor of Steve and Joanne Hayden: Michelle Farrell Thorson

In honor of Laura J. Hein: Michael R. Cunningham
 In honor of Laura J. Hein: Nan and Ed Murphy
 In honor of Benjamin Heller: Tom and Mary Heller
 In honor of Stewart Hudnut's Birthday: Vivian Leith
 In honor of Lydia Kihm: Curb-Crowser, Inc.
 In memory of Gisela Knopka: Paul Snyder and Robert Payne
 In honor of Lisa Larson for Christmas: Carol Lynn Courtney
 In honor of my generous brother Tom Linfield on his birthday: Katja Linfield
 In honor of Bryan and Lisa Litsey: Calvin and Christine Litsey
 In honor of Nicholas Linstroth: Shirley Carter
 In honor of Heather Magers: Mary Magers
 In memory of John T. Mahoney: Carol L. Mahoney
 In memory of sister, Lois Mattke, and brother, Harlen Mattke: Harold W. Mattke
 In honor of Timothy C.H. Mattke, on his move from Las Vegas to Denver, CO: Harold W. Mattke
 In honor of the McCabe Family: Constance Pikala
 In memory of Pat and Gene McHugh's son Brendan: Karen and Jerry Bergseth
 In memory of Jennifer Susan Moe: Jerry Moe
 In memory of Momcat: Dennis L. Flom, Sara Grace
 In memory of Sally Moran: Vivian Leith and Stewart Hudnut
 In memory of Terry Moriarty: Hon. James and Marlys Broberg
 In honor of Jeane Mueller for Christmas: Walter Mueller
 In honor of Ed Murphy: Alan Upin
 In honor of Judith Myers Birthday: Vivian Leith and Stewart Hudnut
 In honor of Monica Nilsson: Dan Bergeron
 In memory of Bryan Ottoson: Judy Ottoson
 In honor of Candace Peterson and Marijean Trew for Christmas: Libby Muir
 In honor of Carol Peterson: Jean F. Schulz
 In honor of John Petroskas and Dawn Dee: Linda Koelman
 In honor of Christine and Maggie Pikala: Constance Pikala
 In honor of John Pikala and Cris Tibbetts: Constance Pikala
 In honor of Plymouth Church: Christopher and Carolyn Bingham
 In memory of Ryan Quirt: Peter and Cecelia Erickson
 In honor of Maria Shea: Robert London
 In honor of Barb Smith for Christmas: Carol Lynn Courtney
 In honor of Catherine Smith, a wonderful grandma: Jennifer Miles

In memory of Rita Steinhagen:
 Patricia Mullen, Anne Pierce
 and Jerry Keger, Arthur and
 Carol Thoms, Marvin Welk
 In honor of Cole Stephan's math
 grade: Mark and Tierza Stephan
 In memory of Elizabeth Thorin:
 Lisa Thorin
 In honor of nieces and nephews
 Alison, James, and Todd:
 Cynthia Weldon
 In honor of Elizabeth L. Westfall:
 Anonymous
 In honor of Joyce and Dennis
 Williams: Douglas Ollila and
 Jane Harper
 In memory of Ervin Winter:
 Ruthanne Lindback
 In memory of Walter Yanke: Kevin
 Donlin

Inkind

Tammy Arnold
 Mohit Bakhru
 William E. Berg
 Karen and Jerry Bergseth
 Beth and Judd Brackett
 Sarah Carlson
 Gail Cerridwen
 Jennifer Crouch
 Chelsie, Ilaura and Julia Curry
 Peter Dahl and Mary Ferkingstad
 Barbara Dorset, Ph.D.
 Leigh Engh
 Shelly Enright
 Miranda Gallagher
 Jeanne and Harry Gallaher
 Gayle S. Godfrey
 Steven, Tony, and Cheryl Gossell
 Melissa and David Hallblade
 Lou Harris
 Paul and Paulette Hastings
 Alyssa Hawkins
 Heather Hawkins and Michael
 Fazzio
 Steve Hawkins
 Wendy Hemmingway
 Beth Holger
 Karyn Hummer
 Denise and Joseph Jubert
 Fifi Kafkas
 Holly Kan
 Betty Kay
 Shawn and Heather Klein Family
 & Friends
 Jamie Knutson
 Holly Koch
 Julie Lawal
 John and Becky Lawyer
 Hazel Leaskas
 Karen Lillis
 Kirk Litinski
 Tom Litke
 Jane Livingston
 Ian Mapp
 Kati Marcus
 Mia Megas
 Elizabeth Mester
 Louise Miles
 The Miller's
 Liz Morgan
 Nan and Ed Murphy
 Dedria Noll
 Dennis Oliver
 Judy Ottoson
 Jenny Perkins and Amanda
 Peterson
 Barbara L. Pratt

Barbara Ratner
 Laurie and Michael Ridgley
 Elizabeth Rowe
 Michael Ryan
 Sue Schiller
 Dennis Seeger
 Angie Shaw
 Randy Shogren & Family
 Jessica Shryack
 Dave Smeets
 David J. Swenson
 Barb Ten Clay
 Stan Thompson & Friends
 Wendy Thompson
 Chris Turns
 Rynne Underhill
 Jeff and Jodi Upin
 Dorothy Vitullo
 Mark Wagenius
 Marcia Wertheimer
 Stacy Winjum

3M Public Relations
 Allina Hospitals & Clinics, Allina
 Commons 7th Floor Employees
 Augsburg College Campus Ministry
 Augustana Lutheran Church of
 Minneapolis
 Aveda Corporation
 Employees of Beckman Coulter Inc.
 BestSweet, Inc.
 Bet Shalom Congregation
 Students of Blake School
 Boston Scientific
 Employees of Cargill, Inc.
 CenterPoint Energy Adopt-A-
 Family Program
 Children's Home Society & Family
 Services
 Children's Theatre Company
 Church of Jesus Christ of Latter
 Day Saints
 Deco Catering
 Dolliff, Inc./Insurance
 Students of Edison High School,
 Advisory 231
 Edward R. Jones, Sandi Larson &
 Nancy Anderson
 Employees of Ernst & Young
 Excelsior United Methodist
 Church, "Sarah's Circle"
 First Congregational Church UCC
 Employees of GMAC-Residential
 Funding Corporation
 Galaxy Youth Center
 Students from Grinnell College,
 Minneapolis Alternative Break
 Hennepin Avenue Methodist
 Church, Knotty Quilters
 Hennepin Theater Trust
 Housing Minnesota "Let the
 Outside In"
 IDDS (InterDistrict Downtown
 School) Third Grade Students
 Jewish Community Relations
 Council, Camp Butwin Campers
 Employees of LSS Data Systems
 Lake Mills Moravian Church
 Employees of Land O'Lakes, Inc.
 Lumen Christi Catholic
 Community
 Lutheran Church of Peace
 Employees of Macy's Southdale
 Furniture Gallery
 Maple Grove Lutheran Church
 Minnesota Environmental Initiative
 Motorola, Inc.
 Mount Calvary Lutheran Church



Mount Zion Temple, members of
 "Sporty" Youth Group
 Muddy Paws Cheesecake
 National Youth Leadership Council
 Students of North Central
 University
 North View Junior High, students
 of Jennifer Wucherer's Family
 and Consumer Sciences Class
 Old Chicago Uptown Minneapolis
 Employees of Pentair
 Project Success
 Project for Pride in Living, After
 School Program
 Employees of Prudential Financial
 Rainbow Laundromat
 Students of Richard R. Green
 Central Park School, Everyday
 Leaders Afterschool Program
 Sauer Children's Renew
 Foundation
 Spirit Garage
 Students of St. Louis Park Junior
 High School, 8th Grade Orange
 Team
 Students of St. Paul Academy
 St. Peters Piecemakers, St. Peters
 Lutheran Church
 Starbucks
 Students of Temple Israel's
 Religious School
 Students of Temple Israel's
 Religious School, Confirmation
 Group
 Target Center
 Target Props & Backgrounds
 Target Stores, Eden Prairie, Share-
 A-Tree
 Time Warner Cable
 Twin Cities Ripple Foundation
 Twin City Cartage
 United Way
 University of Minnesota Law
 School, Journal of Law &
 Inequality

University of St. Thomas Students
 Urban Immersion Service Retreats
 Urban Outfitters
 Urban Servant
 Urban Ventures
 Employees of Waycrosse, Inc.
 Employees of Wells Fargo Bank,
 Roseville
 Westminster Presbyterian Church
 Wild Rumpus
 Zion Lutheran Church, Zion
 Quilters

Matching Gifts

American Express Foundation
 Boston Scientific
 eFunds
 GMAC-RFC
 Honeywell Hometown Solutions
 Prudential Foundation
 Star Tribune Foundation
 Thrivent Financial for Lutherans
 Foundation
 UBS Foundation USA
 Support from many generous
 individuals through the
 following:
 America's Charities
 Community Health Charities-
 Minnesota
 Community Solutions Fund Gifts of
 Choice
 Greater Twin Cities United Way
 Network for Good
 Thomson West Because We Care
 Employee Giving Campaign
 UnitedHealth Group Employee
 Giving Campaign
 Wells Fargo Community Support
 Campaign

BRIDGE STAFF (AS OF AUGUST 1, 2007)

Executive Director
Ed Murphy

Associate Director
Michele Connelly

Program Director
Nancy Cusack

Finance Director
Todd Jeffers

Development Director
Stephen Devereux

Accounting Assistant
Rick Haggar

Administrative Assistant
Tracy Tyler

Data Coordinator
Tamika Garscia

Development Coordinator
Sara Grace

Facilities Manager
Beth Megas

Facilities Assistant
Open

Receptionist
MaRaye Mickey



Emergency Services Program

Program Co-Supervisor
Nikkal Beasley

Program Co-Supervisor
Jeremiah Hawkins

Program Coordinator
Chelsea Miller

Program Trainer
Willie Little

Youth and Family Counselors

Ayan Ali
Tyler Dercks
Michelle Hall
Patrick Harrington
Laura Prink
Clara Schiller
Nate Soderbeg
Kristina Stewart

Overnight Counselors

Kerri Eggers
Melissa Hallblade
Madeline Johnson
Sharon Prigge

Registered Nurse
Cheree Langmade

Family Counseling Supervisor
Nancy Cusack

Family Counselors
Teresa Largaespada
Irene Sabin

YEA Program Staff
Justin Terrell
Nicole Ziegler

On-Call Float Counselor
Breanne Nelson

On-Call Counselors
Marya Anderson
Bradley Arntzen
Brittany Bierbaum
Sarah Coffey
Anna Cruzen
Mary Dahnert
Daren Hendrickson
Bacaseva Hill
Shauna Jonas
Janna Langer
Cassandra Marchessault
Robin Nelson
Jennifer Roper
Willette Ross
Hollie Mae Schultz
Yvonne Skog
Melissa Stangl
Amy Stroman
Jaqueline Thompson
Sarah Thompson
Stephanie Tkach
Doua Xiong

Homeless Youth Program

Program Supervisor
Michael Wolff

Independent Living Skills Coordinators
Lonte Hill
Holly Koch
Dana Zwetow

Overnight Counselors
Ronald Hudnell
Patrick Phillips

Street Outreach/Case Managers
Jaeden Wagner
Moua Xiong

Independent 365

Program Supervisor
Deena McKinney

Lead Independent Living Specialist
Mary Revoy

Independent Living Skills Coordinator
Sandra Weise

Volunteer/Intern Program

Program Supervisor
Shirley Carter

2006 Volunteers/Interns

Elissa Achten
Cheryl Arendts
Jeff Arnold
Bradley Artzen
Tianca Barron
Melissa Binman
Sarah Bizek
Anne Boone
Janine Borchart
Jessica Brewster
Joanna Bronder
Kelsey Budner
Kristien Butler
Cory Call
Janelle Carle
Fayemarie Carter
Heather Conley
Anna Dadaho
Colleen Deafenbaugh
Dana De Jannes
Willie Douglas
Nikki Dupre
Anna Ellis
Brett Erickson
Joshua Facer
Tracy-Jon Fagnan
Amanda Flowers
Kamilla Fossem
Angela Gauthier
Anna Ford
Gerd-Anita Gjerdrum
Mark Gobeli
Gladys Hill
Milt Hill
Sametta Hill
Tine Hoffsbakken
Brittany Kadansky
Sherrie Kahn
Staci Kirchberg
Holly Koch
Julie Koch
Liv Heidi Koppang
Nicole Kresa
Kacey Langmade
Alayna Larsen
Serita Lee
Joanne Leko
Rebecca Lohser
Nicholas Linstroth
Shelly Luppen
Erica Marson
Heather Medd
Amanda Minion
Gudmund Myhren
Breanne Nelson
Proscovia Ojamba
Teju Olaniyi
Stephen Piehl

Colleen Powell
Maria Raj
Jason Redepenning
Katie Roby
Jennifer Roper
Teri Ross
Kristin Rothstein
Andrea Sacarello
Maggie Sauba
Brenda Spraggins
Dennis Seeger
Kate Sherva
Peter Shokman
Lura Shopteau
Yvonne Skog
Latasha Stanifer
Kristina Stewart
Anna Strange
Amy Stroman
Aaron Sullivan
Sarah Thompson
Wendy Thompson
Margret Valen
Robert Wark
Lisa Weisman
Amy Wickberg
Ahmed Yusef
Keri Zehm

Teens Alone

Program Supervisor
Rob Ward

Outreach Counselors
Wendy Epstein
Beth Knoblauch
Chris Ochocki

Board of Directors 2006

Joe Caldwell
US Internet

John Dailey (Secretary)
Strategic Innovations Group

Britt Lundquist Gage
Leaett Studio

Andrea Johnson, Psy.D. LP
Helping Children & Families

R. Jane Livingston
CIT

Peter Loewenson, M.D., M.P.H.
(Vice Chair)
HealthEast Woodbury Clinic

John March (Treasurer)
Cargill Corporation

Patti O'Leary (Chair)
O'Leary and Grant

Craig Smith
General Mills

Harry Sweatt
Honeywell (retired)



Minneapolis, Minnesota 55405
(612) 377-8800 • 24 Hours
www.bridgeforyouth.org

Our Mission

To ensure a safe and enriching environment for youth in crisis by providing safe shelter, building life skills, and assisting families in conflict.

Our Vision

The Bridge will be the resource of choice in the Twin Cities for youth and families in crisis. Working often in collaboration with others, The Bridge will ensure a continuum of care for youth and families seeking assistance. The Bridge will be a leader and catalyst for innovative approaches creating healthier youth and families.

Our Values

- We value the ideas, contributions, and potential of young people.
- We honor the worth, competence, and integrity of families in all their forms.
- We welcome, understand, and encourage diversity among our staff, clients, and colleagues.
- We promote excellence among our staff, volunteers, and interns, and honor their contributions.
- We are passionate about working with youth and their families.